

Be Inspired Agenda Snapshot

All Times Pacific

Sunday, January 23

8:00 a.m.

Morning Golf Tournament

1:00 p.m.

Afternoon Golf Tournament

6:00 p.m.

Chairman's Lecture: Mel Robbins and The 5 Second Rule – Achieve Breakthrough Performance for Your Team and for Your Life

featuring



Mel Robbins

Expert on Leadership & Defeating Doubt, Award-Winning CNN Commentator, and Best-Selling Author

7:00 p.m.

Welcome Reception

Monday, January 24

8:30 a.m.

President's Breakfast: What is New, Now, and Next for Dairy?

featuring



Michael Dykes, D.V.M.

International Dairy Foods Association

9:45 a.m.

Deep Dive – Breaking the Mold: Why Standards Modernization is Essential

featuring



Elizabeth Fawell

Hogan Lovells US LLP



Alain Gerard

Lactalis American Group, Inc.



John Lucey, Ph.D.

University of Wisconsin



John Allan, M.S.

International Dairy Foods Association

Deep Dive – Aligning Federal Spending with Federal Nutrition & Health Policy

featuring



Jeremy K. Everett

Baylor Collaborative on Hunger and Poverty



Ted Mason

National Grocers Association Foundation



Robert Rosado

International Dairy Foods Association

11:00 a.m.

Deep Dive – Building Organizations for the Future of the Dairy Industry

featuring



Ron Dunford

Schreiber Foods



Monica Massey

Dairy Farmers of America



Sheila Murty

Tillamook County Creamery Association



Philomena Satre

Land O'Lakes, Inc.



Keith Schroeder

High Road Craft Ice Cream



Tracy Boyle

International Dairy Foods Association

Deep Dive – Dairy's Role in Addressing Food Insecurity

featuring



Jon Brause

World Food Programme



Navyn Salem

Edesia Nutrition



Erika Thiem

Feeding America



Matt Herrick

International Dairy Foods Association

12:15 p.m.

Lunch Session: Leading Beyond the Walls of the Workplace – What They Don't Teach You in Business School

featuring



Jim Donald

Chairman of Albertson's & Former CEO of Starbucks, Pathmark Supermarkets and Extended Stay Hotels

1:45 p.m.

General Session: Supply Chain Resiliency with Gene Seroka

featuring



Gene Seroka

Port of Los Angeles



Becky Rasdall

International Dairy Foods Association

3:00 p.m.

Conference Partner Sessions

4:00 p.m.

Women in Dairy Reception

Tuesday, January 25

8:30 a.m.

Breakfast Session: The Power of Inclusion and Mindful Engagement in the Workplace

featuring



Steve L. Robbins, Ph.D.

Diversity, Inclusion & Cultural Competency Expert

9:45 a.m.

Deep Dive – 2021 Women in the Workforce Study by McKinsey and LeanIn.Org

featuring

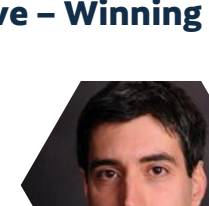


Kate Lloyd George

McKinsey & Company

Deep Dive – Winning the Marketplace: IDFA Study on Milk Pricing Modernization

featuring



Marin Bozic, Ph.D.

University of Minnesota



Phil Plourd

Blimling & Associates



J. David Carlin

International Dairy Foods Association

11:00 a.m.

Deep Dive – The Race to Decarbonize Dairy

featuring



John Harsch

Sustainable Environmental Consultants



Mike McCloskey

Select Milk Producers



Jason Weller

Truterra, LLC



Michael Wironen, Ph.D.

The Nature Conservancy



Danielle Quist

International Dairy Foods Association

Deep Dive – 'Great Attrition' or 'Great Attraction'? The Choice is Yours

featuring



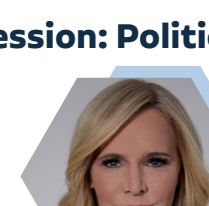
Bonnie Dowling

McKinsey & Company

12:15 p.m.

Lunch Session: Political Outlook

featuring



A.B. Stoddard

RealClearPolitics

1:45 p.m.

C-Suite Talks from the Top

featuring



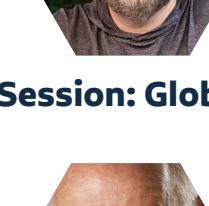
Keith Schroeder

High Road Craft Ice Cream

2:00 p.m.

General Session: Global Dairy Perspective

featuring



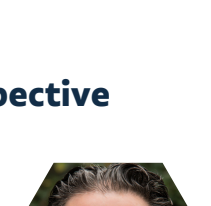
Henrik Hoejen Andersen

Arla Foods Ingredients



Kai Bockmann

Saputo Inc. and International Sector



Émile Cordeau

Agropur Cooperative



Kelvin Wickham

Fonterra Co-operative Group Limited



Patricia D. Stroup

Nestle S.A. | Nestle S.A.

3:00 p.m.

Conference Partner Sessions

5:30 p.m.

Closing Reception

Wednesday, January 26

8:30 a.m.

Breakfast Session: What's Next for Dairy? Perspectives from McKinsey & Company

featuring



Christina Adams

McKinsey & Company



Ludovic Meilhac

McKinsey & Company



Roberto Uchoa

McKinsey & Company

9:30 a.m.

Closing Session: Dairy Dialogues

featuring



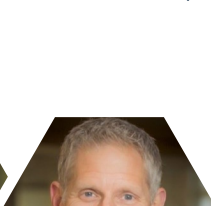
David Ahlem

Hilmar Cheese Company, Inc.



Patrick Criteser

Tillamook County Creamery Association



Tim Doelman

fairlife, LLC



Sheryl Meshke

Associated Milk Producers, Inc.



Michael Dykes, D.V.M.

International Dairy Foods Association